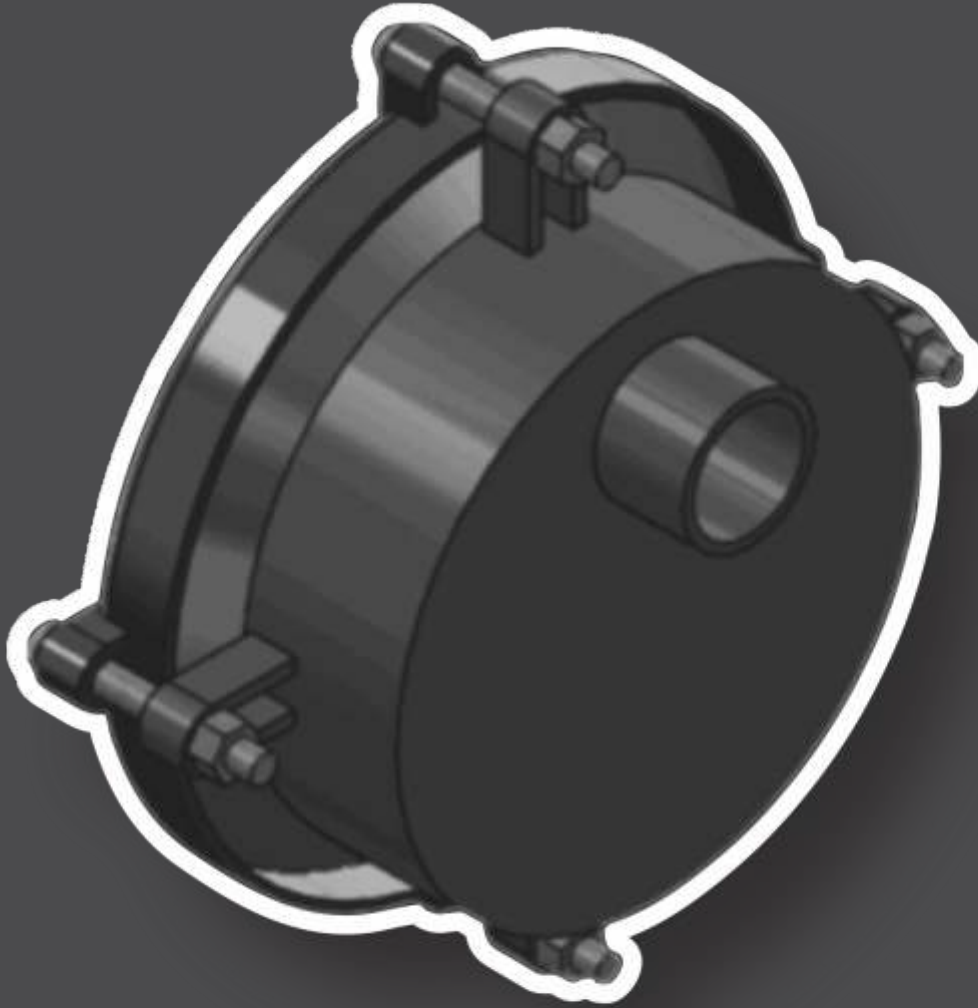


WELBRO
PIPE & COUPLING



**WIDE RANGE
END CAPS / TEST HEADERS
TECHNICAL DATA**

Application

WELBRO End caps or Test headers are designed to be used for blanking off a pipeline end, and pipeline pressure testing. These end caps can be used repeatedly, and can be removed and re-installed without any loss of performance. As with all WELBRO products, WELBRO End caps have a wide sealing range which means it can accommodate a wide variety of pipe OD's as well as pipe imperfections.

Configurations

WELBRO End caps can be supplied sockets if required for pressure testing, and customers can specify both the quantity and sizes of the sockets. If required, bolts and gaskets are available separately if required after several uses.

End caps with long barrels are available upon request.

Pressure Rating

WELBRO End caps up to 600mm are designed for a standard working pressure of 16 bar, and a test pressure of 24 bar. Larger pressure ratings can be accommodated upon request.

Temperature

WELBRO Couplings can be used in applications of between -40°C and 90°C, but are not recommended for use in heating systems

Location

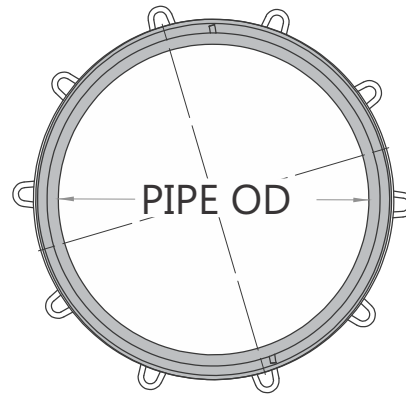
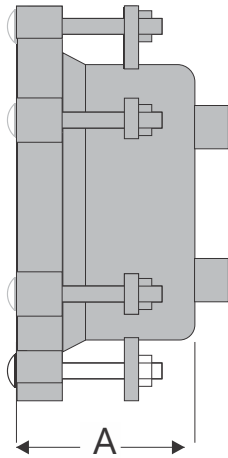
Above or below ground, subject to certain limitations according to product type and pipe material. Factories or any other pipe installation such as pump stations or treatment plants.

Range

WELBRO End Caps are available from 50mm to 600mm. Larger sizes can be accommodated upon request.

Installation

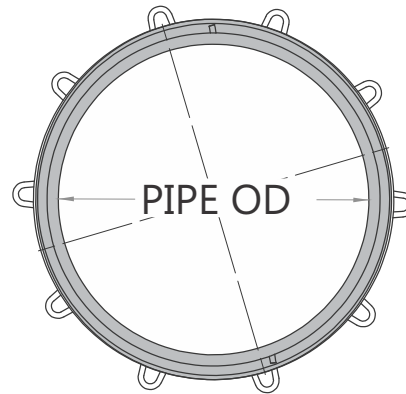
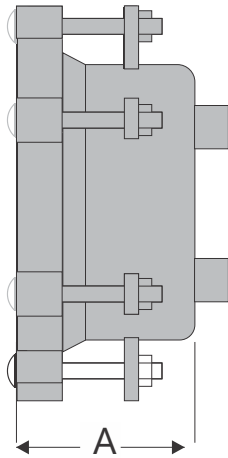
Because end caps are effectively blanked-off ends, they are subject to the immense pressures associated with a pipeline. If not secured properly, a badly or incorrectly installed end cap can cause severe injury and therefore, adequate external restraints are of critical importance.



HDG FASTENERS

DN	ID	RANGE	Product Code	Product Height A	Fasteners	
					Nr	Size
65	68	57-66	WBE0650	165	4	M12x115
70	81	63-79	WBE0700	165	4	M12x115
75	95	80-93	WBE0750	165	4	M12x115
80	106	88-104	WBE0800	165	4	M12x115
100	121	98-118	WBE1000	165	4	M12x115
100/2	131	109-128	WBE1002	165	4	M12x115
125	156	133-154	WBE1250	165	4	M12x115
150	173.5	150-170	WBE1500	165	4	M12x115
175	210	192-209	WBE1750	165	4	M12x115
200	225	210-223	WBE2000	165	4	M12x115
200/2	245	228-243	WBE2002	165	4	M12x115

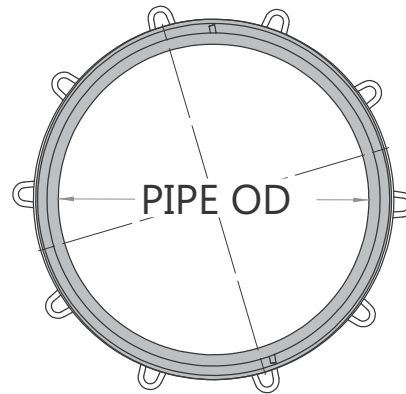
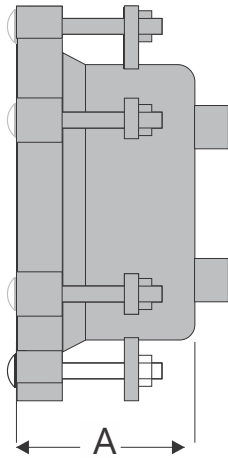
Sockets not supplied as standard - client needs to specify size and quantity
 Standard working pressure PN16
 Test pressure = 1.5 x WP = PN24
 Higher pressures available on request
 Long barrel end caps available on request



HDG FASTENERS

DN	ID	RANGE	Product Code	Product Height A	Fasteners	
225	256	244-253	WBE2250	165	4	M12x115
250	280	168-278	WBE2500	165	4	M12x115
250/2	299	280-295	WBE2502	165	4	M12x115
275	321	302-318	WBE2750	165	6	M12x115
300	330	315-328	WBE3000	165	6	M12x115
300/2	354	334 - 350	WBE3002	225	6	M12x115
300/3	375	356 - 372	WBE3003	225	6	M12x115
350	363	344 - 360	WBE3500	225	6	M12x115
350/2	394	374-391	WBE3502	225	8	M12x115
400	413	391-410	WBE4000	225	8	M12x115
400/2	421	401-417	WBE4002	225	8	M12x115
400/3	440	417-437	WBE4004	225	10	M12x115
400/4	449	430-446	WBE4000	225	10	M12x115

Sockets not supplied as standard - client needs to specify size and quantity
 Standard working pressure PN16
 Test pressure = 1.5 x WP = PN24
 Higher pressures available on request
 Long barrel end caps available on request



HDG FASTENERS

DN	ID	RANGE	Product Code	Product Height A	Fasteners	
450	463	444-460	WBE4500	225	10	M12x115
450/2	478	458-474	WBE4502	225	10	M12x115
450/3	496	477-493	WBE4503	225	10	M12x115
450/4	537	518-534	WBE4504	225	12	M12x115
500	513	494-510	WBE5000	225	12	M12x115
500/2	549	535-545	WBE5002	225	12	M12x115
500/3	596	583-593	WBE5003	225	12	M12x115
550	575	559-571	WBE5500	225	14	M12x115
600	620	606-616	WBE6000	225	14	M12x115
600/2	642	629-638	WBE6002	225	14	M12x115

Sockets not supplied as standard - client needs to specify size and quantity
 Standard working pressure PN16
 Test pressure = 1.5 x WP = PN24
 Higher pressures available on request
 Long barrel end caps available on request

While every effort has been made to ensure that the information in this document is correct and accurate at the time of publishing, WELBRO assumes no responsibility or liability for typographical errors or omissions or of for any misinterpretation of the information contained within the publication and reserves the right to change any information contained herein without notice.

Users of any WELBRO product or information within this document must make their own assessment of suitability for their particular application. Product dimensions are nominal only, and should be verified if critical to a particular installation. No warranty is either expressed, implied, or statutory made by WELBRO unless expressly stated in any sale and purchase agreement entered into between WELBRO and the user.



CONTACT DETAILS

Sales and Distribution

Office: + 27 10 065 1660

Email: sales@welbropipe.co.za

Physical Address

Corner of

Buite and Jacoba Street

Alberton North

Website

www.welbropipe.co.za